

18°19'41"

65°59'14"

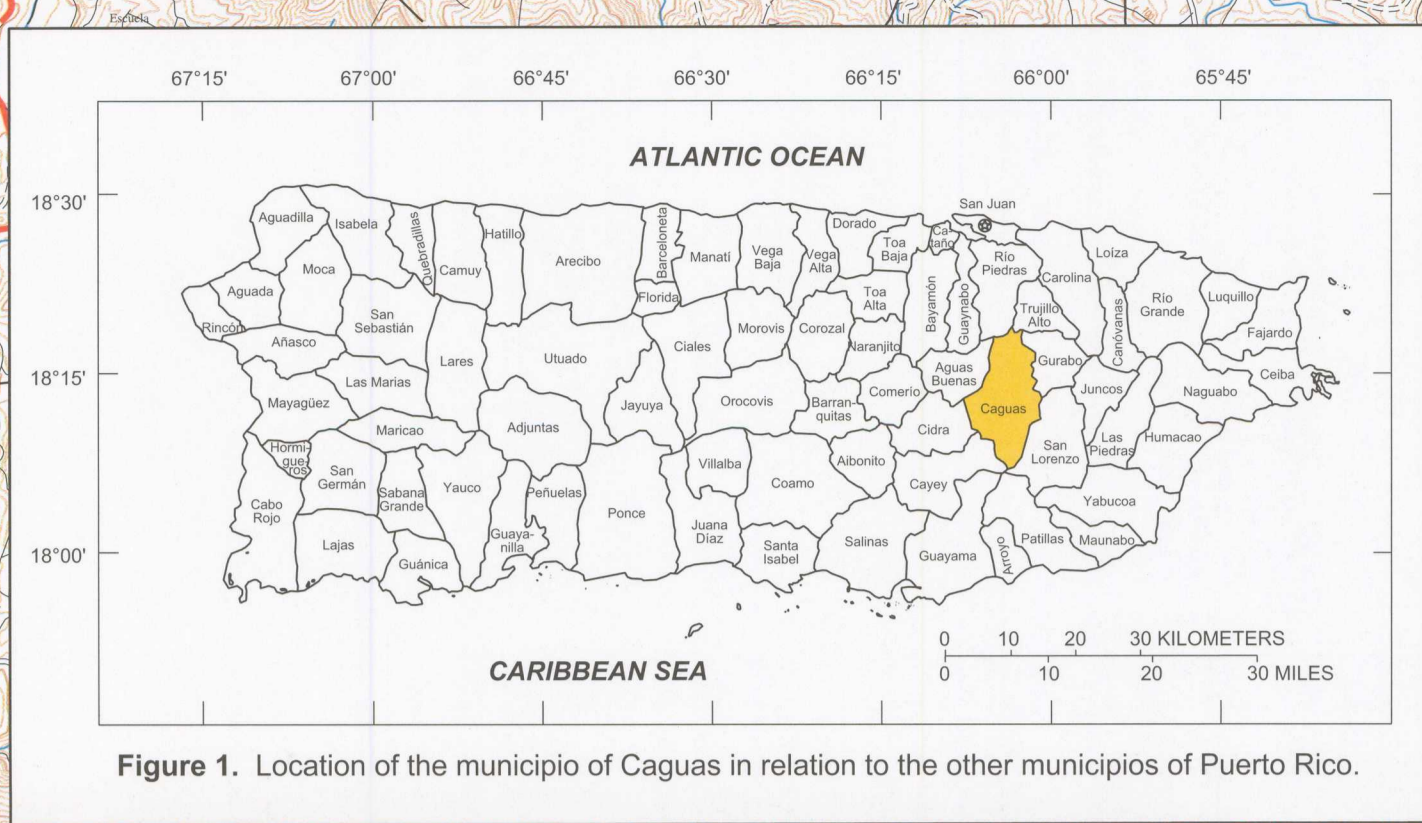


Figure 1. Location of the municipio of Caguas in relation to the other municipios of Puerto Rico.

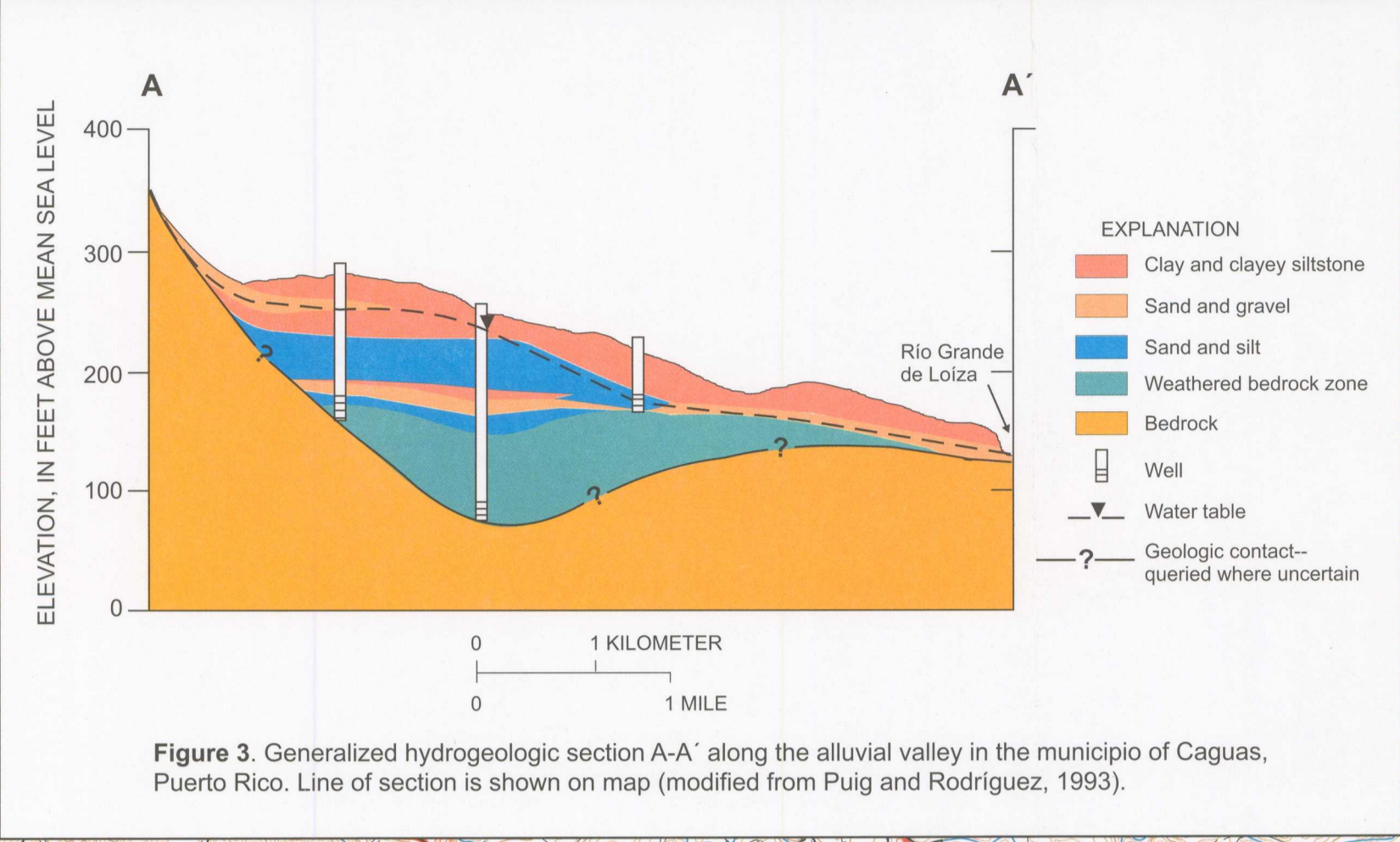
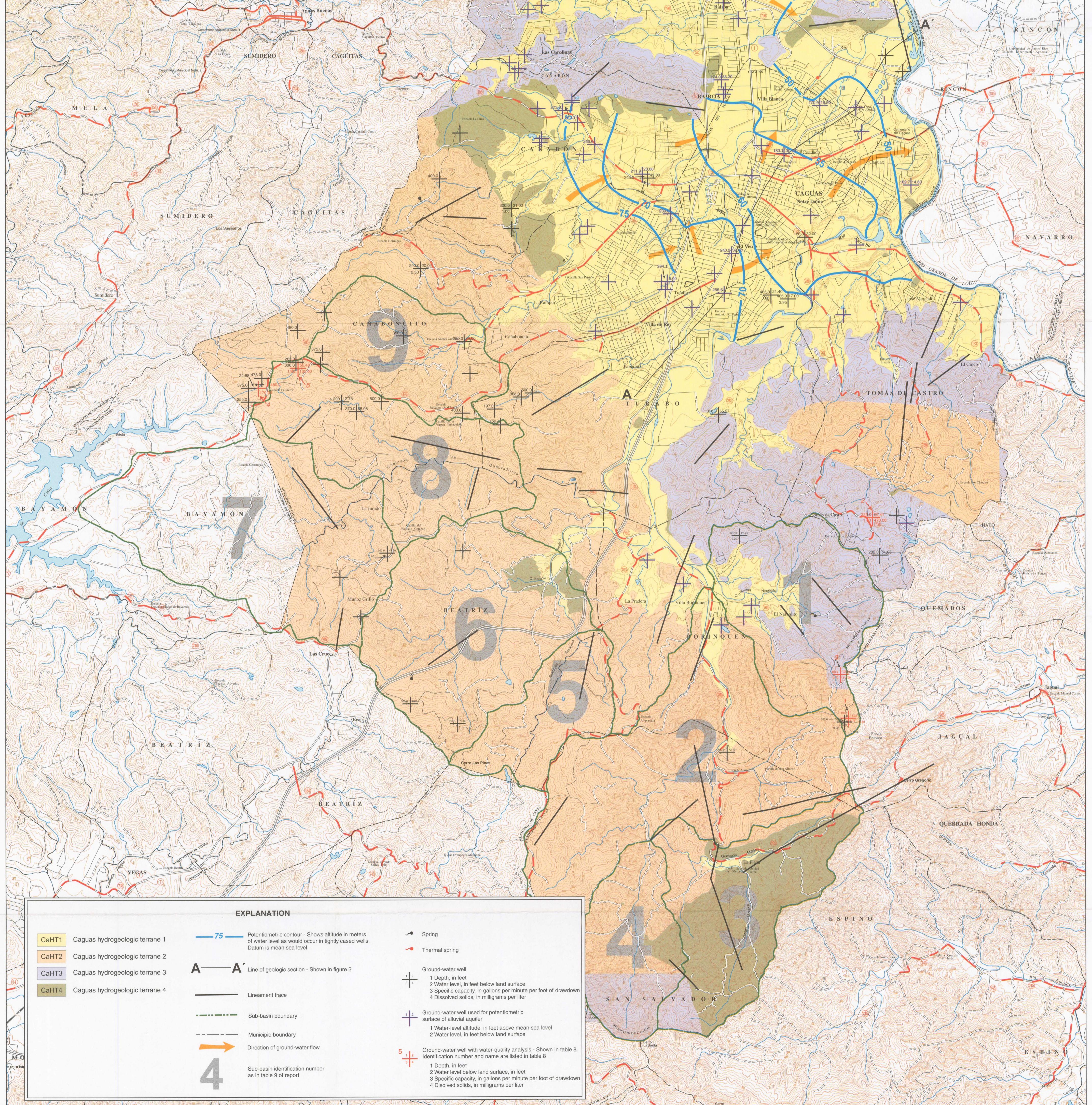


Figure 3. Generalized hydrogeologic section A-A' along the alluvial valley in the municipio of Caguas, Puerto Rico. Line of section is shown on map (modified from Puig and Rodríguez, 1993).



EXPLANATION			
CaHT1	Caguas hydrogeologic terrane 1	75	Potentiometric contour - Shows altitude in meters of water level as would occur in tightly cased wells. Datum is mean sea level
CaHT2	Caguas hydrogeologic terrane 2	A—A'	Line of geologic section - Shown in figure 3
CaHT3	Caguas hydrogeologic terrane 3	—	Lineament trace
CaHT4	Caguas hydrogeologic terrane 4	---	Sub-basin boundary
		---	Municipio boundary
		→	Direction of ground-water flow
		4	Sub-basin identification number as in table 9 of report
		⊕	Spring
		⊕	Thermal spring
		⊕	Ground-water well
		1	Depth, in feet
		2	Water level, in feet below land surface
		3	Specific capacity, in gallons per minute per foot of drawdown
		4	Dissolved solids, in milligrams per liter
		⊕	Ground-water well used for potentiometric surface of alluvial aquifer
		1	Water-level altitude, in feet above mean sea level
		2	Water level, in feet below land surface
		⊕	Ground-water well with water-quality analysis - Shown in table 8. Identification number and name are listed in table 8
		5	1 Depth, in feet
			2 Water level below land surface, in feet
			3 Specific capacity, in gallons per minute per foot of drawdown
			4 Dissolved solids, in milligrams per liter

18°06'20"

Base map from Digital Line Graph data U.S. Geological Survey, Patillas, 1:20,000, photorevised 1982, Juncos, 1:20,000, photorevised 1982, Naranjito, 1:20,000, photorevised 1982, Caguas, 1:20,000, 1964, Gurabo, 1:20,000, 1969, Yabucoa, 1:20,000, 1960, Cayey, 1:20,000, 1972, Comerio 1:20,000, 1966. Map scale in this plate is modified from 1:20,000 to 1:30,000.

HYDROGEOLOGIC TERRANES, SELECTED SUB-BASINS, POTENTIOMETRIC SURFACE OF THE ALLUVIAL AQUIFER, LINEAMENT TRACES, AND WELL LOCATIONS WITHIN THE MUNICIPIO OF CAGUAS, PUERTO RICO

By  
Jesus Rodríguez-Martínez, Fernando Gómez-Gómez, and M.L. Oliveras-Feliciano  
2001